

Cobra mk1

The hardest-hitting gasoline-powered breaker



AVAILABLE AT:
KNICKERBOCKER
RUSSELL CO., INC
412-494-9233



Atlas Copco

44 foot pounds of impact energy

Hitting at an incredible 44 foot pounds, the Cobra mk1 offers the same power-to-weight ratio as many pneumatic or hydraulic breakers. That's almost twice the impact energy of other gasoline-powered breakers.

Low vibration levels

Yet despite the high impact energy, vibration levels are reduced due to a unique, patented vibration dampening system.

High productivity

High percussive energy, in combination with high percussive frequency, means you get the job done faster. Add them up, and you'll see why the Cobra mk1 is the most productive gasoline-powered breaker on the market.

Whatever the job

There are of course no compressors, hoses or cables to set up with a gasoline breaker making it ideal for smaller jobs. And with an extensive range of tools, you can use the Cobra mk1 for everything from cutting and breaking, to driving and compacting.

You can use the Cobra mk1 to:

- break concrete
- cut asphalt
- dig
- drive posts and fences
- drive rods and spikes
- tamp and compact soil
- tamp ballast/ties



Cutting



Digging



Tamping



Breaking



Easy to start

With a decompression valve and electronic ignition, the Cobra mk1 is easy to start.

Ships complete with

Chuck and shank templates, replacement spark plug and starter rope, 1 liter oil, owner's, spare parts and safety manuals, and CE declaration.

Low emissions

The Cobra mk1 meets tough emission requirements, and has been EPA 1-approved.



Vibro-reduction

The patented vibration-dampening system features leaf springs rather than rubber bushings or spiral springs.



Hand and arm protection

Atlas Copco's unique Hand and Arm Protection System (HAPS) reduces the negative effects of harmful vibrations.

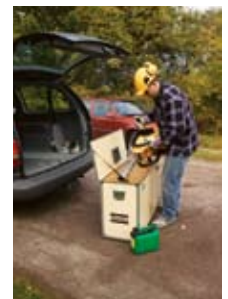


Long lifetime

The high capacity air filter ensures a long working lifetime, even when large quantities of dust and airborne particles are present. It's easy to get to the air filter for quick and easy servicing.

Low noise

An effective silencer ensures that the Cobra mk1 meets the current European Noise Emission Directive (NED).



Easy to transport

The Cobra mk1 weighs just 55 pounds and fits easily into car trunks. A wooden transport box is available.

Model	Tool Shank	Part number
	in	
Cobra mk1	1 1/4" x 6"	8318 0700 03
Cobra mk1	1 1/8" x 6"	8318 0700 07

Technical Data

Weight	Length	Depth	Width over handles	Sound level	Vibration level
lb	in	in	in	(Acc. to ISO 3744)	(Acc. to ISO 8662)
55	36.48	13.02	24.04	109 dB	2.3m/s ²

Capacity

Impact energy	Impact rate
foot pounds	bpm
40-44 (at 1440 bpm)	720-1440

Engine

Type	Power	Cooling system	Starter system	Recommended fuel	Oil type	Oil mix	Fuel capacity	Fuel consumption
90 cc single cylinder two-stroke	2.7 hp (at 5800 rpm)	Fan cooled	Recoil starter	gas, 90-100 octane leaded or unleaded	Atlas Copco two-stroke oil or similar	2% (1:50)	0.26 US gallon	0.34 US gallon/hour

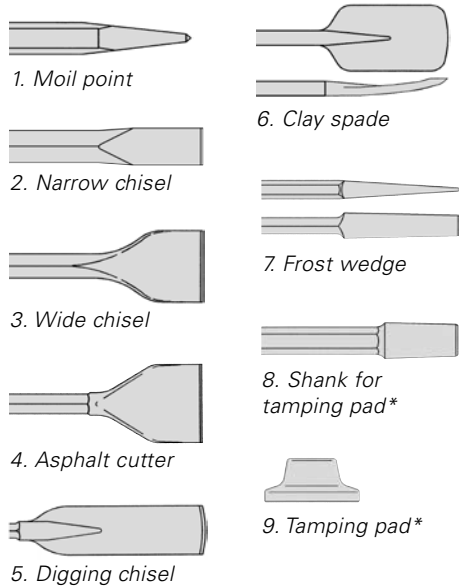
A tool for every job

At Atlas Copco, we maintain a comprehensive range of chisels so that you can select the right tool for the job.

Atlas Copco chisels are among the hardest wearing on the market. A controlled heat treatment process imparts both strength and high wear

resistance to deep surface layers while maintaining a highly shock resistant central core to resist breakage.

The striking face is end-milled resulting in better contact between the piston and the tool, improved transfer of energy, as well as less vibration and wear on both hammer and chisel.



Accessories

Description	Size	Part number
Gloves, gel-filled, general	XL	9800 0070 01
	XXL	9800 0098 01
Gloves, gel-filled, summer	L	9800 0434 01
	XL	9800 0435 01
Gloves, gel-filled, winter	L	9800 0290 01
	XL	9800 0291 01
2-stroke oil	1.0 litre / 0.26 gallon	9238 2743 50
Cart		9234 0006 54
Transport box		9234 0009 91

Use only authorized parts. Any damage or malfunction caused by the use of unauthorized parts is not covered by Warranty or Product Liability.

Tools

	Description	Shank (in)	Blade Size (in)	Working Length (in)	Weight (lbs)	Part Number		
1	Moil Point	1 1/8 x 6		14	6	3083 3267 00		
				18	7	3083 4015 10		
				24	9	3083 4015 20		
		1 1/4 x 6		36	12	3083 4015 30		
				14	7	3083 3285 00		
				18	8	3083 4000 10		
				24	11	3083 4000 20		
				36	15	3083 4000 30		
				14	6	3083 3268 00		
2	Narrow Chisel	1 1/8 x 6		14	6	3083 3268 00		
				18	7	3083 4016 10		
				24	9	3083 4016 20		
		1 1/4 x 6		36	12	3083 4016 30		
				14	7	3083 3286 00		
				18	8	3083 4001 10		
				24	11	3083 4001 20		
				36	15	3083 4001 30		
				15	7	3083 3289 00		
3	Wide Chisel	1 1/8 x 6	3 x 2	15	7	3083 3289 00		
			3 x 2	18	8	3083 4017 00		
			3 x 2	24	10	3083 4017 10		
		1 1/4 x 6	3 x 2	36	15	3083 4017 20		
				15	8	3083 3295 00		
				18	10	3083 4002 00		
4	Asphalt Cutter	1 1/8 x 6	5 x 6	13	9	3083 3292 00		
				1 1/4 x 6	5 x 6	13	9	3083 3298 00
				1 1/8 x 6		3 x 9	15	9
		1 1/4 x 6	15	9	3083 3921 00			
		1 1/8 x 6	5.5 x 9	15	12		3083 3299 00	
				1 1/4 x 6	5.5 x 9	15	10	3083 3293 00
1 1/8 x 6	2 x 12			16		11	3083 3294 00	
1 1/4 x 6		16	12	3083 3300 00				
8	Shank for Tamping pad*	1 1/8 x 6		9	4	3083 3269 00		
				1 1/4 x 6	9	5	3083 3287 00	
				9	Tamping pad*	7 (diameter)	16	3083 3301 00
18	3083 3302 00							

* choose shank size appropriate for your mk1 model (item 8)



Atlas Copco Construction Tools Inc.
 37 Capital Drive, West Springfield MA 01089
 Tel (800) 760-4049 Fax (800) 952-7975
www.atlascopco.com/cto